

MAR-APR

20
10

HAPPENINGS

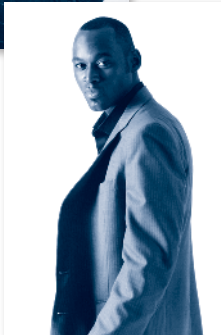
ARTS AND EDUCATION COUNCIL NEWSLETTER

Spotlight: The Sheldon

"KUDOS TO THE PEOPLE OF ST. LOUIS WHO SAVED THIS ABSOLUTELY GORGEOUS VENUE. THIS HALL SINGS ITSELF. IT DOESN'T GET ANY BETTER THAN THIS!"
— EMMYLOU HARRIS, COUNTRY MUSIC SINGER



Wynton Marsalis



Brian Owens

Considered by locals and internationally renowned performers alike as "The Carnegie Hall of St. Louis," The Sheldon, designed by the noted 1904 World's Fair architect Louis C. Spiering, was built in 1912 as the home of the Ethical Society of St. Louis. When the Ethical Society relocated to St. Louis County in 1964, The Sheldon became a primarily music venue. After more than two decades of private ownership, the non-profit Sheldon Arts Foundation was formed in 1988. The Foundation purchased the building in 1991, and today The Sheldon Arts Foundation is governed by a 45-member Board of Directors.

The jewel of the Sheldon, its acoustically perfect Concert Hall, is the site of over 300 events each year, including great jazz, folk and classical music, featuring the world's finest musicians. The Hall's popular *Notes from Home* Tuesday night series, which is now in its 17th year, provides a showcase for local musicians and has been used as a model for similar series throughout the country. Numerous musicians, including the Mick Fleetwood Blues Band and fiddle virtuoso Mark O'Connor, have recorded live albums here. A special treat takes place at 7:30 pm

March 13, when The Sheldon welcomes the Jazz at Lincoln Center Orchestra with Wynton Marsalis for its 2010 Gala.

In 1998, The Sheldon expanded its artistic focus to include six new art galleries in a \$5 million dollar expansion project. The Sheldon Art Galleries encompass 7,000 square feet and feature exhibits on photography, architecture, St. Louis artists, jazz history, emerging artists and children's art.

"There's simply no other place like The Sheldon for quality music and visual arts events, plus the education programs and community events that we present," says Paul Reuter, executive director of The Sheldon. "Over 120,000 adults and children take advantage of our programs throughout the year, and many more through outreach programs in schools and surrounding communities. Everyone involved in The Sheldon is proud to be a part of what makes St. Louis a great city for the arts, and we are grateful for the support of the Arts and Education Council that keeps it all happening."

For more information about the 2010 Gala or The Sheldon programming, call 314.533.9900 or go to www.sheldonconcerthall.org. 

The Sheldon is a Sustaining Funding recipient of the Arts and Education Council.



Marty Stuart



Centene Center for Arts and Education
3547 Olive Street, St. Louis, MO 63103-1014
p 314.289.4000 f 314.289.4019 www.KeepArtHappening.org

OUR MISSION The Arts and Education Council enriches the vibrancy of the St. Louis community by investing in arts organizations and growing the base of local arts supporters.

Board of Directors

CHAIRMAN

Glenn Sheffield

VICE CHAIRMEN

Richard C. D. Fleming

SECRETARY

Kenneth Kranzberg

TREASURER

James A. Krekeler
(Chair, Finance)

AEC PROPERTIES, LLC

Cary Hobbs

DEVELOPMENT

Andrew M. Serri

GOVERNANCE

Peter A. Fanchi

MARKETING/ SPECIAL EVENTS

Nancy Galvin

OPERATING SUPPORT

Rosie Phillips

PROJECT GRANTS

Nora Akerberg

STRATEGIC PLANNING

Michael W. Weisbrod

SUSTAINING FUNDING

Peggy Ritter

MEMBERS

Virginia A. Barnes

Jill C. Brown

Charlene Bry

John Chickey

Debra Denham

Leonard T. Eschbach

Terrance Good

Barbara B. Goodman

Kristin Guehlstorf

Rebecca Jackson

Lawrence P. Katzenstein

Cynthia McCafferty

Boo McLoughlin

Charles F. Meyer

Kevin Mowbray

Paul K. Reuter

Eric Rhone

Marsha Rusnack

Peter Sargent

Judith Cozad Smith

Richard Spradling

Michael Uthoff

Tom Welch

EX-OFFICIO

Cynthia A. Prost

LETTER FROM THE PRESIDENT



Dear Friends,

The Council's 2010 fundraising campaign, The Arts Need You, is well underway, with dozens of workplace giving campaigns in St. Louis area schools, businesses and government agencies up and running. Arts organizations and arts education programs are vital to a healthy, vibrant community, but they cannot exist without your support. Consider that a gift of \$50 can provide a pair of dance shoes for a needy student or tickets and transportation for five students to attend an arts program or 10 weeks of music reading classes for one student. The best way for you to assure that arts organizations and arts education in the St. Louis metropolitan area remains strong and vital is to contribute to Council's annual campaign.

Our 19th Annual St. Louis Arts Awards, which took place January 25 at the Chase Park Plaza, is a not-so-distant memory, but as you can see in this issue of *Happenings*, we've captured many of the highlights of that great evening in dozens of terrific photographs of both the recipients and attendees. Be sure to check out our website at www.keeperhappening.org for more pictures and details. I want to extend my thanks to the more than 600 people who supported the Arts Awards with their attendance and enthusiasm.

Cindy

Cynthia A. Prost
President



ARTS &
EDUCATION
COUNCIL

KEEP ART HAPPENING®

Our Staff

PRESIDENT

Cynthia A. Prost

VICE PRESIDENT, MARKETING & COMMUNICATIONS

Brian Adkisson

CORPORATE RELATIONS MANAGER

Lillian J. Bales

COMMUNICATIONS CONTENT EDITOR

Ellen Futterman

DATA SPECIALIST

Wanda Jones

CAMPAIGN ASSOCIATE

Polly Klasek

CORPORATE RELATIONS ASSOCIATE

Lisa L. Masters

CAMPAIGN MANAGER/ PROFESSIONAL, EDUCATION & GOVERNMENT

Dorothy Powell

VICE PRESIDENT, OPERATIONS/GRANTS AND SERVICES

Susan Rowe Jennings

CONTROLLER

Joseph Soer

OPERATIONS ASSISTANT

Maria Straub

CAMPAIGN MANAGER/ FOUNDATIONS, INDIVIDUALS & NONPROFITS

Patricia Tichacek



Guest Column *By Marilu Knode*



ONE OF MY OBJECTIVES as the new executive director at Laumeier Sculpture Park is to engage in a dialogue of place and re-invigorate the relationship

between art and community that Laumeier is uniquely poised to explore. Laumeier's spring exhibition, *Mark Newport: Self-Made Man*, subversively questions perceptions of heroes and masculinity through his knit anti-hero costumes and fetishized comic book covers, linking his conceptual practice with some of our warmest childhood memories.

Join us as the artist crashes the local knitting scene with a *Knit-In @ the Park* on April 3. Newport and knitters will fan across the Park's landscape. They might comfort a tree with its own cozy, or truss up a bench with its own girdle — what

ever they do, Newport and his co-crafters will make the public space warm and fuzzy. Audiences will be invited to participate in free hands-on art activities with a chance to knit/chat with one of today's most challenging, sardonic fiber artists.

Springtime in St. Louis would not be complete without a visit to Art Fair at Laumeier. The Mother's Day weekend tradition in its 23rd year will feature 150 artists from across the country as well as popular local entertainers, culinary fare and the fashionable Art of the Vine on Friday night. This year's edition will feature Erin Bode and wine tastings from a host of Missouri wineries. We hope you will join us May 7, 8 and 9 and discover a new artist for your collection at the Fair! ■

Marilu Knode is executive director of Laumeier Sculpture Park and the Aronson Endowed Professor of Modern and Contemporary Art at the University of Missouri—St. Louis. Laumeier is an Operating Grant recipient of the Arts and Education Council.

2010 St. Louis Arts Awards

UNFORGETTABLE ENTERTAINMENT AND HEARTFELT TRIBUTES WERE among the many highlights of the 2010 St. Louis Arts Awards held January 25 inside the Khorassan Ballroom of the Chase Park Plaza Hotel. Performances from Antonio Douthit and Alicia Graff of Alvin Ailey American Dance Theater; David Halen and Daniel Lee of the Saint Louis Symphony Orchestra and two-time Grammy Award winner Sylvia McNair drew standing ovations from the more than 600 people in attendance.

The line-up of honorees was as impressive as well, with the Arts and Education Council presenting awards to Stephanie Riven (Lifetime Achievement), David Robertson (Excellence in the Arts), Citygarden (Arts Collaboration), the Regional Arts Commission (Champion of the Arts), Dr. Wilfred and Ann Lee Konneker (Excellence in Philanthropy), Ameren (Corporate Support of the Arts) and Beverly Whittington (Art Educator of the Year). Here are some snapshots of the remarkable evening.

2010
St. Louis Arts Awards

January 25, 2010

party
would not be a word without art



AEC Board Chair Glenn Sheffield, Mayor Francis Slay and AEC President Cynthia A. Prost



Co-chairs: Sarah Smith and Dick Fleming, Karen and James Castellano



Stephanie Riven



Daniel Lee



Ameren President and CEO Thomas Voss



AEC Board Chair Glenn Sheffield, Beverly Whittington and AEC President Cynthia A. Prost

DISCOUNT CALENDAR MAR-APR 2010



Enjoy 2-for-1 admission and special discounts!

MARCH EVENTS

BLACK REP

Yesterdays - An Evening with Billie Holiday

WHEN: Feb 24-Mar 14; Wed and Thurs, 7 pm; Fri, 8 pm; Sat, 3 and 8 pm; Sun, 3 pm

WHERE: Grandel Theatre, 3610 Grandel Square, St. Louis

COST: \$30.50-\$43

DISCOUNT: 2-for-1 admission with the ARTS Card

Jazz sensation Vanessa Rubin performs over a dozen of Holiday's most well-known songs. 314.534.3810 or www.theblackrep.org

NEW JEWISH THEATRE

The People's Violin

WHEN: Feb 24-Mar 14; Wed-Thurs, 7:30 pm; Sat, 8 pm; Sun, 2 and 7:30 pm

WHERE: Clayton High School, #1 Mark Twain Circle, Clayton

COST: \$24-\$34

DISCOUNT: \$2 off ticket with the ARTS Card

When Sol Shank undertakes a documentary film about his Holocaust authority-author father, he uncovers hidden chapters in his father's past. 314.442.3283 or www.newjewishtheatre.org

COCA

Family Theatre Series presents Fairy Tales with Maestro Rob Kapilow

WHEN: Mar 5-7; Fri, 7 pm; Sat, 3 and 5 pm; Sun, 1:30 and 3:30 pm

WHERE: 524 Trinity Ave., University City

COST: \$14-\$22

DISCOUNT: 2-for-1 admission with the ARTS Card for Saturday matinees only

Composer, conductor, pianist and commentator Rob Kapilow introduces family audiences to fairy tales and classical music along with pianist Judith Gordon and the PickleShoes Dancers. 314.725.6555 or www.cocastl.org

ST. LOUIS CHILDREN'S CHOIRS

Family & Friends Concerts

WHEN: March 6-7; Sat, 7 pm; Sun, 3 pm

WHERE: Purser Center at Logan College, 1851 Schoettler Rd., Chesterfield

COST: \$10 adults; free for children 5-18 (no children under 5 because concert is being recorded)

DISCOUNT: \$5 admission with the ARTS Card

All six ensembles, including 450 young singers ages 6-18, will perform. 314.993.9626 or www.slccsing.org

BACH SOCIETY

Bach's Mass in B minor

WHEN: Mar 7; Sun, 7 pm

WHERE: St. Francis Xavier (College) Church, at the corner of Grand Ave. & Lindell Blvd., St. Louis

COST: \$20-35

DISCOUNT: Buy one \$25 ticket and get one free with the ARTS Card

The Bach Society performs this towering masterpiece with soloists Soprano Sherezade Panthaki, Mezzo Debra Hillabrand, Tenor Don Frazure and Bass Curtis Streetman. 314.652.2224 or www.bachsociety.org

SHELDON CLASSICS

Chopin and Paderewski featuring pianist Peter Henderson and the Ilex Trio

WHEN: Mar 10; Wed, 8 pm

WHERE: Sheldon Concert Hall, 3648 Washington Blvd., St. Louis

COST: \$25-\$30

DISCOUNT: 2-for-1 admission with the ARTS Card at the Fox Theatre box office at 531 N. Grand, or on the night of show at the Sheldon box office between 7-8 pm

Pianist Peter Henderson performs the glorious piano music of two Polish musical giants — Frederic Chopin and Ignace Paderewski. Kristin Ahlstrom and Anne Fagerburg will join Peter for a performance of Chopin's wonderful Piano Trio. 314.533.9900 or www.sheldonconcerthall.org

ALEXANDRA BALLET

Giselle

WHEN: Mar 13; Sat, 7:30 pm and Mar 14; Sun, 2 pm

WHERE: Blanche M. Touhill Performing Arts Center, UMSL Campus, One University Blvd., St. Louis

COST: \$20-30 adults, \$10 Children

DISCOUNT: 2-for-1 admission with the ARTS Card Peasant maiden, Giselle, falls in love with aristocrat, Albrecht. Giselle dies of a broken heart, but the power of her love saves Albrecht's life. Cincinnati Ballet's Kristi Capps and Anthony Krutzkamp perform with the music of Adolphe Adam. 314.516.4949 or www.alexandraballet.com

RIVER STYX

Shane Seely and Lyrae Van Clief-Stefanon

WHEN: Mar 15; Mon, 7:30 pm

WHERE: Duff's Restaurant, 392 Euclid Ave., St. Louis

COST: \$4-\$5

DISCOUNT: 2-for-1 admission with the ARTS Card 314.533.4541 or www.riverstyx.org

REPERTORY THEATRE OF ST. LOUIS

The Fantasticks

WHEN: Mar 17-Apr 11; Tues, 7 pm; Wed-Fri, 8 pm; selected Wed, 1:30 pm; Sat, 5 pm; selected Sat, 9 pm; Sun, 2 pm, selected Sun, 7 pm

WHERE: Loretto-Hilton Center for Performing Arts, 130 Edgar Rd., Webster Groves

COST: \$15-\$68

DISCOUNT: 2-for-1 admission with the ARTS Card Mar 17-28

Filled with whimsy and magic, this must-see musical tells the tale of two young lovebirds from neighboring families who keep their romance a secret from their feuding fathers. Little do the kids know that their dads are actually good friends who've hatched a plan to get the pair down the aisle. 314.968.4925 or www.repstl.org

ST. LOUIS FAMILY THEATRE

Max and Ruby

WHEN: Mar 19-21; Fri, 7:30 pm; Sat & Sun, 2 pm

WHERE: Florissant Civic Center Theatre, #1 James J. Eagan Dr. (Parker Rd. at Waterford Dr.), Florissant

COST: \$7

DISCOUNT: 2-for-1 admission with the ARTS Card New York's Theatreworks USA's musical based on the books by Rosemary Wells and the television program on Nick Jr. and Noggin. 314-921-5678 or www.florissantmo.com

FLORISSANT FINE ARTS COUNCIL

Tony Kenny's "Celtic Nights"

WHEN: Mar 20; Sat, 8 pm

WHERE: Florissant Civic Center Theatre, #1 James J. Eagan Dr. (Parker Rd. at Waterford Dr.), Florissant

COST: \$27 adults; \$25 seniors/students

DISCOUNT: 2-for-1 admission with the ARTS Card Celebrate St. Patrick's Day with an evening of Irish music, step-dancing, laughter and tears. 314.921.5678 or www.florissantmo.com

BLACK REP

Five Guys Named Moe

WHEN: Mar 24-Apr 25; Wed and Thurs, 7 pm; Fri, 8 pm; Sat, 3 and 8 pm; Sun, 3 pm

WHERE: Grandel Theatre, 3610 Grandel Square, St. Louis

COST: \$30.50-\$43

DISCOUNT: 2-for-1 admission with the ARTS Card Nomax finds five guys named Moe emerging from his '30s-style radio singing the hit songs of Louis Jordan, who paved the way for rock and roll in the 1950s. 314.534.3810 or www.theblackrep.org

*2 FOR 1 & SPECIAL DISCOUNTS

Please present your Arts and Education ARTS Card at the ticket counter or box office in order to receive a discount. The 2-for-1 offer is for two people only per card; whether it extends to more than two persons is at the discretion of the participating organization. ARTS Card holder discounts are not recognized by electronic ticket outlets and may not be used to purchase subscription tickets. Expired ARTS Cards will not be accepted. For up-to-the-minute calendar additions, log on to the Calendar on our website: www.KeepArtsHappening.org.

DANCE ST. LOUIS

Azure Barton and Artists

WHEN: Mar 26-27; Fri, 8 pm; Sat, 2 and 8 pm

WHERE: Fox Theatre, 524 N. Grand Ave., St. Louis

COST: \$30-\$50

DISCOUNT: \$25 admission with the ARTS Card for Saturday matinee only

This young Canadian protégée of Mikhail Baryshnikov is burning a hot streak from England to Australia with her "beautifully mad" new dances. 314.534.6622 or www.dancestlouis.org

CLASSICAL GUITAR SOCIETY

Douglas Niedt

WHEN: Mar 27; Sat, 8 pm

WHERE: Ethical Society, 9001 Clayton Rd., Ladue

COST: \$20-\$22

DISCOUNT: \$2 off admission with the ARTS Card

St. Louis native Niedt plays music of Duke Ellington, Richard Rodgers, George Gershwin and Dave Brubeck. 314.567.5566 or www.guitarstlouis.net

JACOBY ARTS CENTER

Fiddleback

WHEN: Mar 27; Sat 7 pm

WHERE: 627 E. Broadway, Alton (just off the Clark bridge)

COST: \$8

DISCOUNT: 2-for-1 admission with the ARTS Card

Victoria Brannan acoustic string band and the St. Louis Fiddle Ensemble in a cabaret setting. Cash bar. 618.462.5222 or www.jacobyartscenter.org

CRESCENDO CONCERT SERIES

Trio Voronezh, Russian Folk Instrumental Trio

WHEN: Mar 7; Sun, 3 pm

WHERE: Trinity Episcopal Church, 318 S. Duchesne Dr., St. Charles

COST: \$12-\$15 adults; \$5 students

DISCOUNT: 2-for-1 adult admission with the ARTS Card

Trio Voronezh plays traditional Russian folk tunes. 636.724.2507 or www.crescendoconcerts.org or www.TrioVoronezh.com

APRIL EVENTS

UPSTREAM THEATER

Outlying Islands

WHEN: Apr 9-25; Thurs-Sat, 8 pm; Apr 11 and 18; Sun, 7 pm; April 25; Sun, 3 pm

WHERE: Kranzberg Arts Center, 501 N. Grand Ave., St. Louis

COST: \$25 adults; \$20 seniors; \$15 students

DISCOUNT: Buy one ticket get the second half price with the ARTS card

Three characters are caught in a web of sexual tension on a remote Scottish island on the eve of WWII. 314.863.1077 or www.upstreamtheater.org

ST. LOUIS CHAMBER CHORUS

Concert V: Strings ATTACHED?

WHEN: Apr 11; Sun, 3 pm

WHERE: Grace United Methodist Church, 6199 Waterman Ave., St. Louis

COST: \$24 adult, \$10 students

DISCOUNT: 2-for-1 admission with the ARTS Card

Hear works for guitar and choir as the Hanser McClellan duo joins the Chorus for unusual arrangements from Juan de Anchieta's *Villancico Con Amores*, to Bachianas Brasileiras 5 of Villa-Lobos, to Pachelbel's *Canon in D*. 636.458.4343 or www.chamberchorus.org

NEW JEWISH THEATRE

Romeo & Juliet

WHEN: Apr 14-May 2; Wed-Thurs, 7:30 pm; Sat, 8 pm; Sun, 2 and 7:30 pm

WHERE: Missouri History Museum, Forest Park, Des Lee Auditorium, St. Louis

COST: \$24-\$34

DISCOUNT: \$2 off admission with the ARTS Card

Shakespeare's classic set in Palestine in 1947 during the war for Israeli Independence. A world premiere adaptation. 314.442.3283 or www.newjewishtheatre.org

RIVER STYX

Erin Keane and Karen McElmurray

WHEN: Apr 19; Mon, 7:30 pm

WHERE: Duff's Restaurant, 392 Euclid Ave., St. Louis

COST: \$4-\$5

DISCOUNT: 2-for-1 admission with the ARTS Card

314.533.4541 or www.riverstyx.org

FLORISSANT FINE ARTS COUNCIL

Route 66

WHEN: Apr 20; Sat, 8 pm

WHERE: Florissant Civic Center Theatre, #1 James J. Eagan Dr. (Parker Rd. at Waterford Dr.), Florissant

COST: \$27 adults; \$25 seniors/students

DISCOUNT: 2-for-1 admission with the ARTS Card

A Hit-song fueled ride across the nation's most celebrated road featuring hits from the '50s and '60s. 314.921.5678 or www.florissantmo.com

DANCE ST. LOUIS

Moscow Festival Ballet

WHEN: Apr 23-24; Fri, 8 pm; Sat, 2 and 8 pm

WHERE: Touhill Performing Arts Center, UMSL Campus, One University Blvd., St. Louis

COST: \$30-\$50

DISCOUNT: \$25 tickets with the ARTS Card for Saturday matinee only

One of the best-known of the new post-Soviet touring companies, the Moscow Festival Ballet perform familiar classics as well as rare European favorites. 314.534.6622 or www.dancestlouis.org

BACH SOCIETY

Rheinberger's Mass for Double Chorus

WHEN: Apr 24; Sat 7:30 pm

WHERE: Our Lady of the Pillar Catholic Church, 410 S. Lindbergh 63131

WHEN: Apr 25; Sun, 3 pm

WHERE: Holy Cross Evangelical Lutheran Church, 2650 Miami St., St. Louis

COST: \$20-\$35

DISCOUNT: Buy one \$25 ticket and get one free with the ARTS Card

The program also includes works by Anton Bruckner, René Clausen, Stephen Paulus and Gustav Holst. 314.652.2224 or www.bachsociety.org

JACOBY ARTS CENTER

Configurations: Christine Banda string quartet.

WHEN: Apr 24; Sat 7 pm

WHERE: 627 E. Broadway, (just off the Clark bridge), Alton

COST: \$8

DISCOUNT: 2-for-1 admission with the ARTS Card

Classical, swing and tango performed in an intimate setting. Cash bar. 618.462.5222 or www.jacobyartscenter.org

SHELDON CLASSICS

Samuel Barber featuring cellist Bjorn Ranheim, baritone James Ivey, and pianist Peter Henderson

WHEN: Apr 28; Wed, 8 pm

WHERE: Sheldon Concert Hall, 3648 Washington Blvd., St. Louis

COST: \$25-30

DISCOUNT: 2-for-1 admission with the ARTS Card at the Fox Theatre box office at 531 N. Grand, or on the night of show at the Sheldon box office between 7-8 pm

A quartet performs Samuel Barber's *String Quartet, Op. 11* (with the *Adagio for Strings*.) Cellist Bjorn Ranheim performs Barber's *Cello Sonata*. Baritone James Ivey sings *Dover Beach*, and Peter Henderson plays *Excursions* for piano. 314.533.9900 or www.sheldonconcerthall.org

Boeing/Arts and Education Council 2009-2010 Collaborative Grants

THE BOEING COMPANY, IN COLLABORATION with the Arts and Education Council, has awarded \$50,000 in grants to 10 arts and arts education programs in the St. Louis metropolitan area. These programs include a component aimed at developing future leaders skilled in the successful creation and operation of viable arts organizations. In addition, many of these programs offer hands-on experiences such as apprenticeships, internships and fellowships that assist in nurturing creative thinking and employment skills necessary to develop and enhance arts practitioners.

The grants, each of which is \$5,000, were made for special projects running from November 1, 2009 to October 31, 2010. Programs receiving Boeing/Arts and Education Council 2009-2010 Collaborative Grants are:

Atrek Dance Collective: *Youth Outreach Fellowship.* This program provides a college student hands-on experience working alongside the administrators, program coordinators and teachers who make youth outreach programs possible.

Contemporary Art Museum St. Louis: *Teen Museum Council.* A diverse group of

teens will meet for 8-12 weeks during the summer for a series of workshops with staff, introducing the teens to all aspects of non-profit museum management.

Gitana Productions: *Southside Multi-cultural Arts Initiative: Phase II.* Youth from the African American and immigrant communities work with professional teachers and staff through the arts programs and main stage events, including a musical production and play.

Grand Center: *Non-Profit Arts Practicum.* Two part-time college-age interns (one interested in development, the other in events/marketing) are immersed in the day-to-day operations of the multi-faceted organization.

Jazz St. Louis: *Internship.* This year-long program allows for an apprentice, under the direction of seasoned staff members, to learn the business of arts management while advancing the uniquely American art of jazz via the non-profit model.

Modern American Dance Company: *Body Talk.* This professional development program provides arts administration training for two MADCO dancers, resulting in a new arts education program

that will tour St. Louis area schools from Jan. 2010 – May 2012.

Opera Theatre of Saint Louis: *Administrative Internship Program.* This internship program will provide training, job experience and guidance in all aspects of opera production and management from professional staff and the artists who stage each spring festival season.

St. Louis Children's Choirs: *Apprenticeship Program.* Four to five academically advanced music students and non-profit trainees will learn the artistic and/or administrative functions of the Children's Choirs.

St. Louis Volunteer Lawyers and Accountants for the Arts: *No Artist Left Behind.* This academic program provides exposure to basic legal and business matters to help college students make the transition from the academic environment to their artistic careers.

Upstream Theater: *Training for Tomorrow.* Five apprentices, paired with professional mentors, are trained in lighting and set design, technical direction, stage management and arts administration. ■

In Memory Brad Graham Public Relations Manager, Repertory Theatre of St. Louis



BRAD GRAHAM, LONGTIME PUBLICIST FOR THE REPERTORY THEATRE OF ST. LOUIS AND SOCIAL NETWORKING pioneer died January 4, 2010 at the age of 41. At a memorial service held at the Rep on Jan. 24, friends spoke of Mr. Graham's wit and gift for writing as well as his love of the theater and of St. Louis. A 1991 graduate of Webster University, he was widely known as a pioneer in social networking who was considered to be influential in the birth of blogging. He started his own blog, *The Bradlands* (www.bradlands.com) in 1998. He was also known to many as a long-time participant in the SXSW Interactive Festival. Through his blogging and involvement with SXSW, Mr. Graham built a large circle of friends around the country. He will be remembered by many as having first coined the term "blogosphere," which was added to the *Oxford English Dictionary* in 2004.

In eulogizing him, *Post-Dispatch* theater critic Judith Newmark wrote: "Brad started out as an old-media writer (I believe a typewriter was involved) but he embraced new forms, blogging and tweeting and doing all kinds of things I don't even know the verbs for...He loved this stuff, and many of the people mourning him now never met him face to face. But they were crazy about his imagination, his style and his generosity." ■

Circle of Giving 11.16.09 – 1.15.10

The following donors have made gifts that enable the Arts and Education Council to invest in arts organizations and enhance the cultural life of the St. Louis metropolitan community.

\$50,000 and above

Wells Fargo Advisors

\$25,000–\$49,999

The Boeing Company

\$10,000–\$24,999

Brown Shoe Company, Inc.

Centene Charitable Foundation

Nancy and Ken Kranzberg

Novus International, Inc.

RCGA/St. Louis Commerce Magazine

Sigma-Aldrich Corporation

\$5,000–\$9,999

BJC HealthCare

Mr. and Mrs. Stephen F. Brauer

Bryan Cave LLP

Edison Family Foundation

Mr. and Mrs. Walter J. Galvin

Laclede Gas Charitable Trust

Macy's

Mr. and Mrs. William J. Marshall

John M. Olin Charitable Trust

PNC Foundation

RubinBrown LLP

TricorBraun

Washington University in St. Louis

Webster University

\$2,500–\$4,999

Anonymous

BKD, LLP

Mr. and Mrs. Lester J. Buechele

Des Lee Collaborative Vision

Fifth Third Bank

Barbara B. Goodman

HOK

KFUO-FM Classic 99

Leigh Gardine College of Fine Arts

at Maryville University

PricewaterhouseCoopers LLP

Regional Arts Commission

Regional Business Council

Regions

Stephanie L. Riven

Thompson Coburn LLP

U.S. Trust, Bank of America

Private Wealth Management

University of Missouri–St. Louis

Webster University

Mr. and Mrs. Eugene F. Williams, Jr.

\$1,000–\$2,499

Barbara Archer

The Bascom Foundation

Mrs. Donald Danforth, Jr.

Dr. William H. Danforth

Mr. and Mrs. Gerald E. Daniels

Mr. and Mrs. Irl F. Engelhardt

Mr. and Mrs. Leonard T. Eschbach

Mr. and Mrs. John H. Ferring IV

Gretta Forrester

William L. Gleiber

John R. Goodall Charitable Trust

Mr. and Mrs. Henry O. Johnston

Lee R. Kaplan

Lucy and Stanley Lopata Charitable Trust

McCormack Baron Salazar, Inc.

Mr. and Mrs. Sanford N. McDonnell

Mr. and Mrs. Robert J. Messey

Donna Moog and Leonard Landsbaum

Betty A. Moulton

Steve O'Loughlin

Mr. and Mrs. Raymond W. Peters II

Mr. and Mrs. Jerry E. Ritter

Mr. and Mrs. William C. Rusnack

Saint Louis Art Museum

Mr. and Mrs. Edwin G. Shifrin

Ruth and Alvin Siteman

Mary Strauss

Dr. Mark Weil

Donna Wilkinson

\$500–\$999

Arcturis

Andrew N. Baur

Sally Bliss and Jim Connett

Buckeye International, Inc.

Mr. and Mrs. Peter H. Bunce

Rodney Crim

Fleishman-Hillard Inc.

Mr. and Mrs. Sam Fox

Thomas N. Goldman

Mr. and Mrs. Joseph L. Goltzman

Terrance J. Good

Jean Goodson

Grand Center, Inc.

Mark Grieman

Lauren Herring

Janet McAfee Inc.

Mr. and Mrs. Ernest G. Jaworski

Mr. and Mrs. Robert E. Jones

David C. Joyner

Heather B. Katz

Dr. and Mrs. David M. Kipnis

Mr. and Mrs. Bernard Kohm

Mr. and Mrs. Alan C. Kohn

Mr. and Mrs. Ken E. Kotiza

Warren and Susan Lammert

J. David and Lucy S. Levy

Sally S. Levy

Mr. and Mrs. Peter F. Mackie

Cynthia McCafferty

Mr. and Mrs. John F. McDonnell

Eileen K. McLoughlin

Repertory Theatre of St. Louis

Mr. and Mrs. Michael M. Scharf

Mr. and Mrs. David S. Sherman III

Mr. and Mrs. J. Richard Skouby

Stephen W. and Linda Skrainka

St. Louis Children's Choirs

Mr. and Mrs. Alan Sunshine

Richard Tao

Lynne Tatlock and Joseph Loewenstein

Irene L. Thalden

Drs. Peter and Susan Tuteur

Drs. Stephen R. and Gillian Waltman

David P. Weiss

Mr. and Mrs. Gary Wolff

In Tribute

11.16.09 – 1.15.09

In honor of Ann Lee and Will Konneker

Mr. and Mrs. Irl F. Engelhardt

In memory of Amy Jeter

Herndon Products

Tributes are a unique way to support the Arts and Education Council while honoring family and friends. Contact Wanda Jones at 314.289.4009 or wanda-j@keeparthappening.org to learn more.



KEEP ART HAPPENING®

Centene Center for Arts and Education
3547 Olive Street
St. Louis, Missouri 63103-1014

Nonprofit Org.
U.S. Postage
PAID
St. Louis, MO
Permit No. 1872

Address Service Requested



FOR 17 DAYS AND NIGHTS, BEGINNING OCTOBER 1, 2010, THE AMERICAN Arts Experience—St. Louis will fill concert halls, museums, theaters, universities and outdoor spaces in the

St. Louis area with dozens of performances and shows by renowned American artists and companies in disciplines ranging from symphonic music to jazz and singer-songwriters, as well as theater by American playwrights, dance by American companies and art by American visual artists. The American Arts Experience—St. Louis will be an annual festival each October celebrating all mediums of American arts.

The festival will showcase the St. Louis' rich and diverse artistic community. Participating organizations include the Saint Louis Art Museum, Saint Louis Symphony Orchestra, Sheldon Concert Hall and Art Galleries, Dance St. Louis, Repertory Theatre of St. Louis, Edison Theatre, Contemporary Art Museum St. Louis, Laumeier Sculpture Park, Jazz St. Louis, Stages, The Black Rep, COCA, Pulitzer Foundation for the Arts, Missouri Botanical Garden, Saint Louis Zoo, Missouri Historical Society, Regional Arts Commission and the Touhill Performing Arts Center.

The full calendar of events will be updated regularly at www.americanartsstl.org. The American Arts Experience—St. Louis is sponsored by Emerson. 